

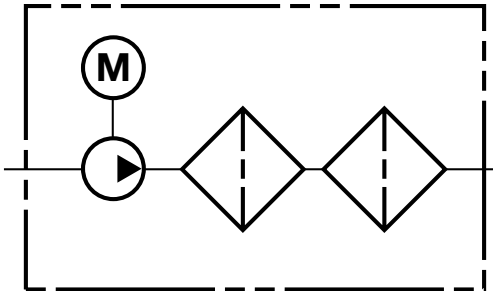
OFFLINE FILTRATION SYSTEMS

OF5HS/HD-MV Series

Off-line Filter Kidney Loop System



Hydraulic Schematic



Description

HYDAC's OF5HS-MV and OF5HD-MV are stationary versions of the OFCD-MV. It is a compact, self-contained filtration system equipped with high efficiency, high capacity elements capable of removing particulate contamination and/or free water quickly, conveniently and economically. This off-line system can be used to supplement in-line filters when adequate turnover cannot be achieved in the system.

Applications

- Supplementing in-line filtration by system filters when adequate turnover cannot be attained
- Large volume systems requiring multiple filters in different locations
- Cleaning up a hydraulic system following component replacement

Features and Benefits

- Single, double and triple bowl length option allows the flexibility of additional dirt-holding capacity
- Base-ported filter provides easy element service from the top cap
- D5 Dirt Alarm® indicates when filter element needs changed
- Two 7/16 – 20 UNF sampling port included on all models (upstream)
- Suction strainers to protect pump
- Optional HY-TRAX contamination monitoring and CSI-C-11 Communication Interface for WLAN transmission of data

Technical Specifications

Flow Rate	6 gpm (22.7L/min) max and 10 gpm (37.0 L/min) max
Viscosity Range	40 - 5,000 SUS (4 - 1000 cSt)
Fluid Temperature Range	25°F to 150°F (-4°C to 65°C)
Bypass Valve Setting	Cracking: 30 psi (2 bar)
Material	Manifold and cap: Cast aluminum Element case: Steel
Compatibility	All petroleum based hydraulic fluid. <i>Contact factory for use with other fluids.</i>
Motor	1.0HP 110VAC/60HZ TEFC (6gpm)
	1.5HP 110VAC/60HZ (10gpm)

Model Code

OF5HD-MV - 27 - G - 10 - G - 05 - V - - 06 -

Series

OF5HD-MV = Offline filter kidney loop system for fluids up to 5,000 SUS

Element Length

2-09 = Two 9" Element Supplied (*per housing; must be same micron rating*)
 3-09 = Three 9" Element Supplied (*per housing; must be same micron rating*)
 18 = One 18" Element Supplied
 27 = One 27" Element Supplied

Element Media (1st housing)

G = Betamicon GeoSeal®
 AM = Aquamicon GeoSeal® (*must be used in first housing, or both housings*)

Filtration Rating (1st housing)

03, 06, 10, 25 = Element filtration rating (*not applicable with AM element media*)
 X = Filter elements supplied separately

Element Media (2nd housing)

G = Betamicon GeoSeal®

Filtration Rating (2nd housing)

03, 05, 10, 25 = Element filtration rating (*not applicable with AM element media*)
 X = Filter elements supplied separately

Seals

V = FPM (*Viton®*)

Voltage

(omit) = 115 VAC / 60 Hz / 1 Ph.
 A = 230 VAC / 60 Hz / 3 Ph.
 B = 460 VAC / 60 Hz / 3 Ph.
 C = 220 VAC / 50 Hz / 1 Ph.
 D = 230 VAC / 60 Hz / 3 Ph.

Pump Size

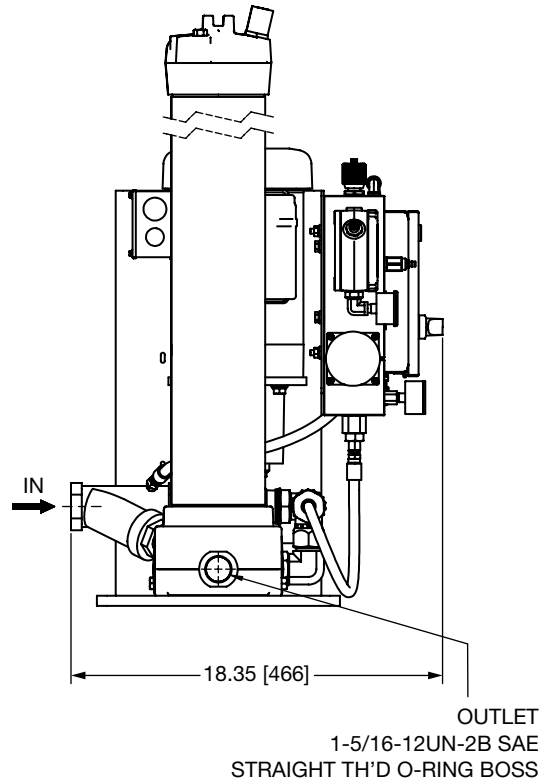
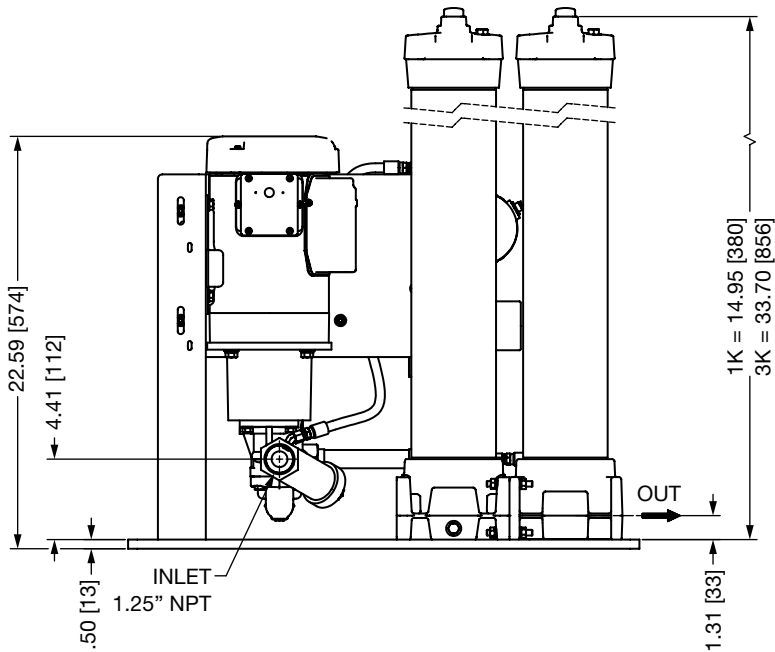
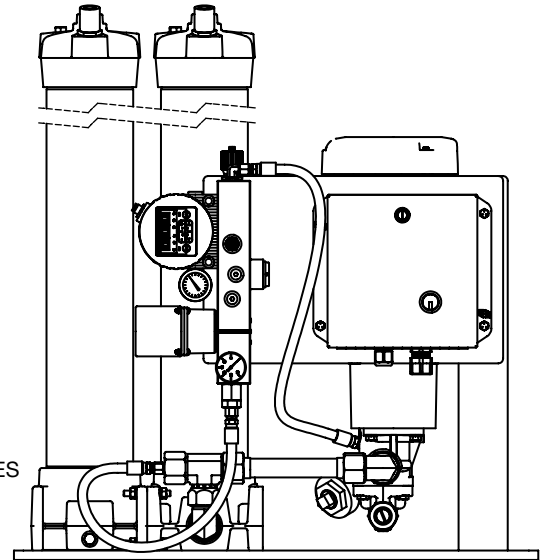
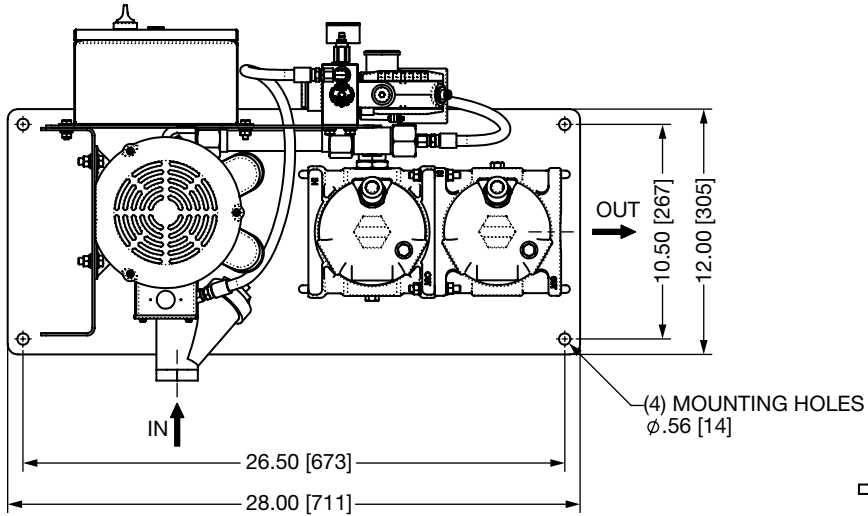
06 = 6gpm
 10 = 10gpm

Options

PC = HY-TRAX Contamination Monitoring System (*only available with 115 VAC / 60 Hz / 1-Ph. voltage*)
 CSI = CSI-C-11 Sensor Interface Option for data acquisition (*only with PC option*)
 CSI-W = CSI-C-11 Sensor Interface Option for data acquisition with AS1008 Water Saturation Sensor (*only with PC option*)

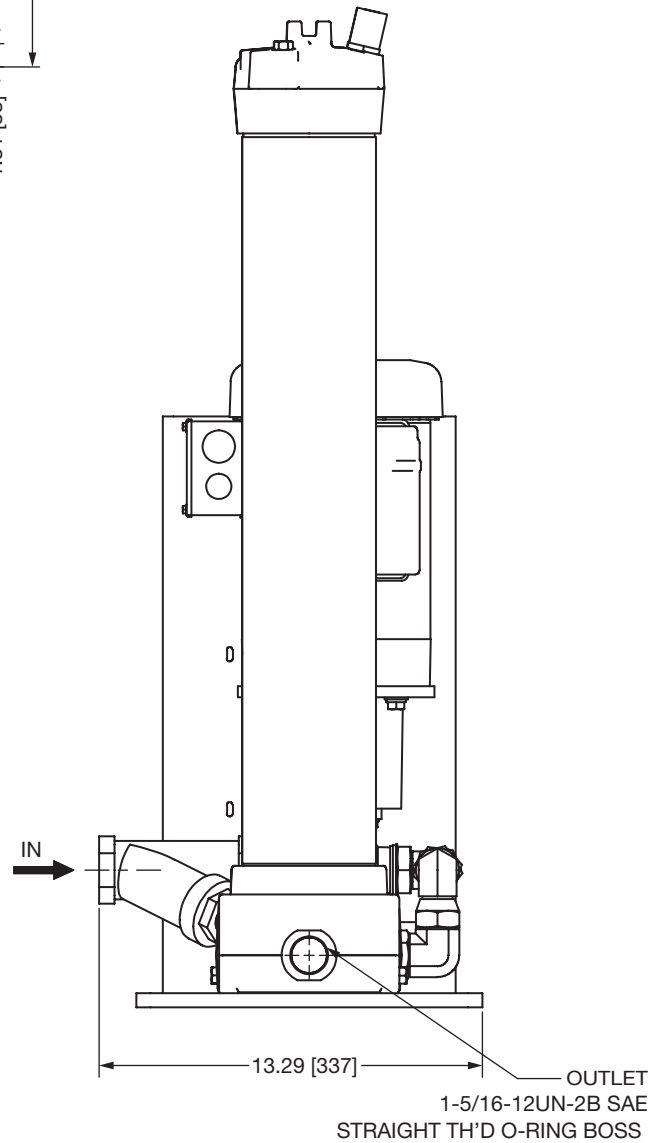
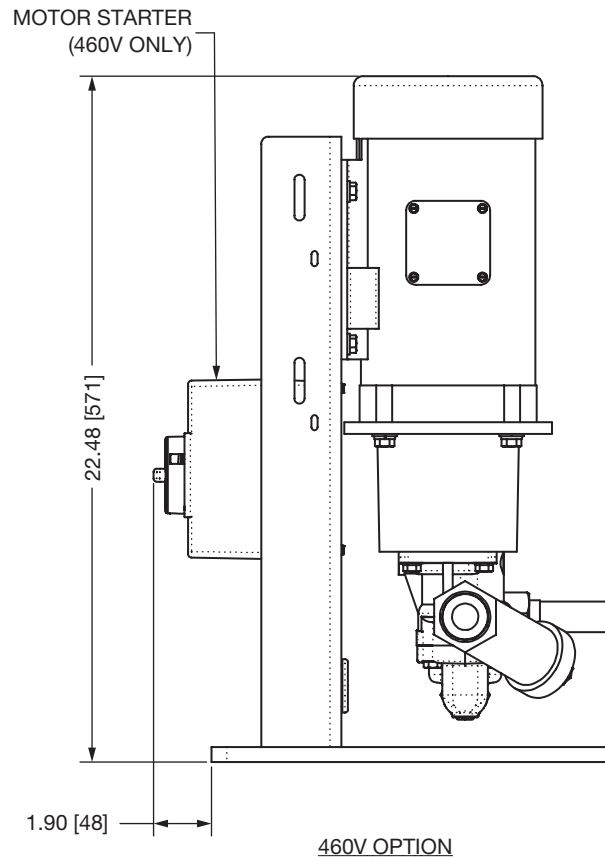
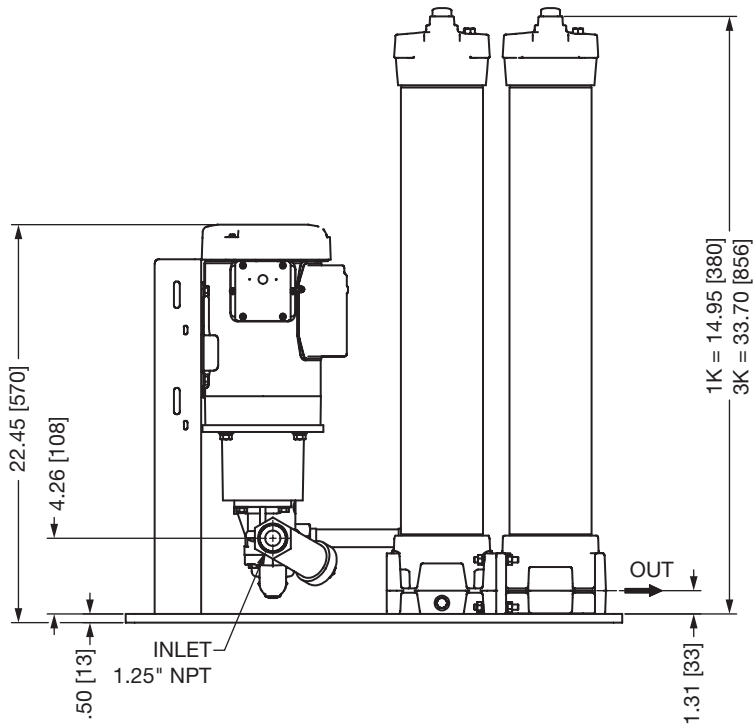
OFFLINE FILTRATION SYSTEMS

Dimensions OF5HS-MV



Dimensions are for general information only, all critical dimensions should be verified by requesting a certified print.

Dimensions OF5HD-MV



Dimensions are for general information only, all critical dimensions should be verified by requesting a certified print.